

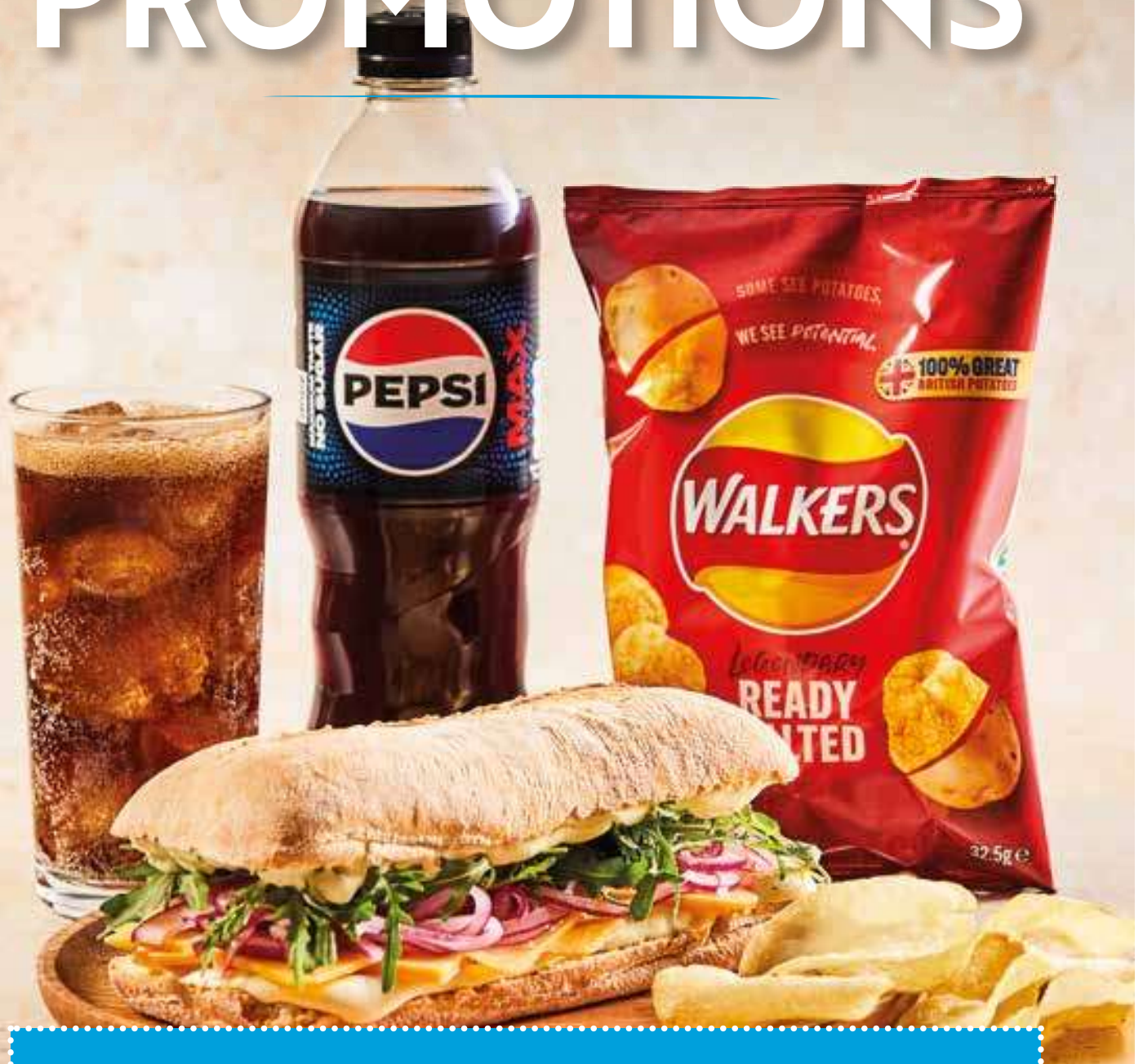
Stiritup

H
HARLECH
FOODSERVICE
EST 1972
GWASANAETH BWYD

July

01/07/24 - 26/07/24

PROMOTIONS



**WALKERS READY
SALTED CRISPS**

32 x 32.5g CODE: 34216

£21.59
per case
67p per bag

PEPSI MAX
24 x 500ml CODE: 2803

£21.59
per case



DELIVERING A TOTAL FOODSERVICE SOLUTION
ORDER LINE 01766 810810

Offers

Pages 2 – 3
Breakfast

Page 4 – 10
Mains

Pages 11 – 13
Desserts

Pages 14 – 16
Beverages & Snacks

Pages 17
Kitchen Supplies



BREAKFAST



WEETABIX PORTIONS B PACK

48 x 2 CODE: 2882

£20.39
per case



WEETABIX CATERING C PACK

1 x 96 CODE: 1325

£21.99
per case



ALPEN MUESLI

30 x 45g

- Original
CODE: 39128
- No added sugar
CODE: 86495

£11.09
per case



KELLOGG'S

- Frosties
40 x 35g CODE: 6435
- Cornflake
40 x 24g CODE: 7029
- Coco Pops
40 x 35g CODE: 8009
- Rice Krispies
40 x 22g CODE: 5029

£17.99
per case



ALPEN

24 x 29g

- Strawberry with Yoghurt
CODE: 25210
- Fruit & Nut with
Chocolate CODE: 15395

£9.99
per case
42p each

It's all about the Brunch!

Brunch options offer a delightful blend of breakfast and lunch, providing a unique dining experience for customers.

Whether you're an early riser or prefer a leisurely morning, brunch accommodates many preferences. Why not mix up your brunch menu with this Smashed Peas on Toast recipe.

Last year data from OpenTable found that breakfast and brunch bookings were up 65% over the past two years, which suggests that consumers continue to be hungry for more when it comes to brunch!

Scan here
to see the
full recipe



Smashed Peas on Toast

**COUNTRY RANGE
CHOICE GARDEN PEAS**

2.5kg CODE: 38388

£4.79 
per bag

Savour the Signature...

>> Providing a rustic, homemade finish and a silky soft centre, the New Signature by Country Range Chef's Chunky Fries are double coated and triple-cooked to offer an irresistible crunch that holds for at least 40 minutes.

Made solely using flavoursome Fontane potatoes, this special variety ensures a super-sized fry and consistency throughout the year.





**COUNTRY RANGE
TRADITIONAL
CORNISH PASTY
- UNBAKED**

24 x 283g CODE: 70527

£36.59
per case
£1.52 each



**COUNTRY RANGE
STEAK & KIDNEY PIE
- UNBAKED**

36 x 157g CODE: 74636

£33.59
per case
93p each



**COUNTRY RANGE
CHICKEN &
MUSHROOM PIE
- UNBAKED**

36 x 157g CODE: 36691

£34.99
per case
97p each





COUNTRY RANGE
100% BEEF BURGERS
30 x 170g CODE: 56989

£27.99 
per case

COUNTRY RANGE
BRIOCHE BUNS 4.5"
6 x 8 CODE: 22490

£18.99 
per case
40p each

COUNTRY RANGE
HOT & SPICY WINGS
1kg CODE: 67212

£6.99 
per bag



**COUNTRY RANGE
BREADED CHICKEN
BREAST GOUJONS**

2kg CODE: 48554

£16.99 
per bag

**COUNTRY RANGE
SWEET CHILLI
DIPPING SAUCE**

1ltr CODE: 73207

£3.59
each



**COUNTRY RANGE
BBQ WINGS**

1kg CODE: 44626

£6.99 
per bag

**GREENS
BATTERED ONION
RINGS**

1kg CODE: 74314

£3.29 
per bag

**GREENS
BEER BATTERED
ONION RINGS**

1kg CODE: 38292

£7.49 
per bag

COUNTRY RANGE MADRAS CURRY SAUCE

2.2kg CODE: 66330

£10.99
each



BISTO GRAVY GRANULES 25LTR

1.8kg (25ltr)

- Original CODE: 48700
- Poultry CODE: 17167
- Reduced Salt NGCI CODE: 2358
- Gluten Free Fine Vegan CODE: 66405
- Vegetarian CODE: 2808

£14.99
per tub

MAJOR LIGHT VEGETABLE STOCK

1 x 1kg CODE: 2198

£24.99
per case

MAJOR BEEF PASTE

1 x 1kg CODE: 8317

£25.39
per case





*Butternut Squash
and Broccoli Farfelle*

**COUNTRY RANGE
BROCCOLI**

10 x 1kg CODE: 60605

£24.39
per case



MAGGI BECHAMEL

2kg CODE: 1886

£17.79
per tub



**COUNTRY RANGE
WHOLETAIL SCAMPI**

454g CODE: 58722

£7.19
per bag

Country Range Herb and Spice of the Month



>> This month's Country Range Herb and Spice of the month are...

- **Country Range Ground Cumin**

A key ingredient in many spiced dishes of the Indian sub-continent, the Middle East and other regions, ground cumin seeds deliver a pungent, dry spice flavour.

- **Country Range Dried Basil**

An essential ingredient in Italian and numerous tomato-based recipes and sauces, dried basil has an intense flavour, so always use less dried basil in recipes than fresh. The dried basil compliments rosemary and oregano to give a balanced flavour in marinades for olives, and is perfect in recipes that include grilled meats such as lamb, and cheeses like halloumi.



*Lamb Meatballs
with Flatbread*

**COUNTRY RANGE
GROUND CUMIN**

430g CODE: 13492

£12.49
each

**COUNTRY RANGE
DRIED BASIL**

200g CODE: 38802

£4.19
each



*Basil Marinated
Lamb Chops*

**SIGNATURE BY
COUNTRY RANGE
CHOCOLATE &
MARMALADE
MARBLE CAKE**

1 x 16 Pre-portioned
CODE: 42374

£23.99
each

£1.50 per portion



Signature
by Country Range

Showstopping Desserts

>> For delicious coffee and cake opportunities, why not add an indulgent fully finished cake to your dessert display.

Cakes come in a variety of flavours and textures, offering a delightful experience during a coffee break throughout the day.

Whether it's a rich chocolate cake, a light and fluffy sponge cake, or a creamy cheesecake, the indulgent taste and texture of the cake paired with the aroma and warmth of freshly brewed coffee create a moment of comfort and enjoyment for customers.

COUNTRY RANGE SALTED CARAMEL CHEESECAKE

1 x 12 Pre-portioned
CODE: 73559

£18.99
each
£1.58 per portion



COUNTRY RANGE CHOCOLATE CHERRY OMBRE CAKE

1 x 14 Pre-portioned
CODE: 11642

£23.49
each
£1.68 per portion



BIRDS INSTANT CUSTARD POWDER

1 x 3kg CODE: 3087

£22.99
per case





*Chocolate
Pudding*

**FLORA PLANT
DOUBLE**

1ltr CODE: 19957

£6.99
each



**COUNTRY RANGE
CHOCOLATE ORANGE
CHEESECAKE**

1 x 14 Pre-portioned
CODE: 70767

£27.09
each
£1.94 per portion



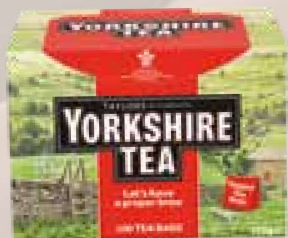
*Brandy Poached
Raspberry Brulee*

**COUNTRY RANGE
RASPBERRIES**

1kg CODE: 83804

£11.39
per tub





**YORKSHIRE
TEABAGS 600'S**
1 x 600 CODE: 45694

£17.49
per case

**YORKSHIRE TEA
TAGGED & ENVELOPED
TEA BAGS**
200's CODE: 71349

£13.99
per case



**NESCAFÉ ORIGINAL
STICK PACKS
(DOUBLE FILTER)**
360g (200's) CODE: 3213

£20.99
per case
10p each



**NESCAFÉ ORIGINAL
DECAFFEINATED
STICK PACKS**
360g (200's) CODE: 2455

£22.99
per case
11p each

**NESCAFÉ
GOLD BLEND**
750g CODE: 70353

£38.99
per tin



**CADBURY'S HOT
CHOCOLATE STICKS**
30 x 28g CODE: 2109

£10.99
per case
37p each

**CADBURY DRINKING
CHOCOLATE**
2kg CODE: 3207

£14.49
per tub



**BRONTE
TRADITIONAL
MINIPACKS**

100 x 30g CODE: 5760

£31.99
per case



MCVITIES FIG ROLL

12 x 200g CODE: 32852

£14.59
per case
£1.22 each



**MCVITIE'S
CUSTARD CREAMS**

12 x 150g CODE: 3245

£7.89
per case
66p each



MCVITIE'S RICH TEA

24 x 200g CODE: 3252

£40.99
per case
£1.71 each



**MCVITIE'S MILK
CHOCOLATE DIGESTIVE**

12 x 266g CODE: 10034

£34.89
per case
£2.91 per pack



**RADNOR HILLS
STILL SPRING WATER
IN A CAN**

24 x 330ml CODE: 60938

£9.99
per case
42p each



**PEPSI MAX
CHERRY**

24 x 500ml CODE: 83636

£21.59
per case



7UP

24 x 500ml CODE: 70171

£21.59
per case



7UP ZERO

24 x 500ml CODE: 52028

£21.59
per case

FRUITSHOOT

24 x 275ml

- Orange
CODE: 89005
- Apple & Blackcurrant
CODE: 39557

£14.99
per case
62p each



POM-BEAR CRISPS

36 x 19g CODE: 67080

£16.29
per case
45p each



MINI CHEDDARS ORIGINAL GRAB BAG

30 x 45g CODE: 46195

£22.99
per case



SEABROOKS

50 x 18g

- Sea Salt CODE: 52660
- Cheese & Onion CODE: 55676
- Salt & Vinegar CODE: 10349

£10.49
per case
21p per bag



REAL CRISPS

24 x 35g

- Ham & English Mustard CODE: 78566
- Salt & Vinegar CODE: 56571
- Sweet Chilli CODE: 39273
- Cheese & Onion CODE: 20664
- Sea Salt CODE: 74686

£13.99
per case
58p per bag



WALKERS CRISPS

32 x 32.5g

- Prawn Cocktail CODE: 39451
- Salt & Vinegar CODE: 40101
- Roast Chicken CODE: 53925
- Cheese and Onion CODE: 55187
- Smoky Bacon CODE: 41310

£21.59
per case
67p per bag



DORITOS

32 x 40g

- Chilli Heatwave CODE: 41346
- Cool Original CODE: 76475
- Tangy Cheese CODE: 19640

£22.29
per case
70p each



NESTLE SMARTIES POUCH BAG

8 x 105g CODE: 59755

£11.99
per case



ROWNTREE'S FRUIT PASTILLES

10 x 143g CODE: 40300

£11.99
per case



COUNTRY RANGE SWEET BISCUIT ASSORTMENT

4 x 500g CODE: 45730

£10.49
per case

COUNTRY RANGE DIGESTIVE BISCUITS

21 x 400g CODE: 47686

£31.89
per case
£1.52 each

MCVITIE'S ORANGE CLUB SINGLES

60 x 22g CODE: 54074

£26.29
each

Whilst we change our packaging to our brand new style, we don't want anything going to waste, so you may see a mixture of old and new styles for a little while.
The great quality product hasn't changed!

**COUNTRY RANGE
ANTIBACTERIAL
HAND SOAP**

2 x 5ltr CODE: 89437

£12.99
per case



**COUNTRY RANGE
CONCENTRATED
WASHING UP
LIQUID**

2 x 5ltr CODE: 83228

£8.29
per case
£4.15 each



**COUNTRY RANGE
RINSE AID**

5ltr CODE: 84357

£12.49
per case



**BLUE CENTREFEED
ROLL 120M**

6 x 120mm CODE: 41761

£9.19
per case
£1.53 each

**POPPIES
WHITE NAPKINS
33CM 2PLY 2000**

16 x 125 CODE: 61872

£27.89
per case



**COUNTRY RANGE
PINE DISINFECTANT**

2 x 5ltr CODE: 51953

£7.99
per case
£3.99 each



**COUNTRY RANGE
THICK BLEACH**

2 x 5ltr CODE: 21489

£8.59
per case
£4.29 each



**15KG HEAVY
DUTY BIN BAGS**

1 x 200 CODE: 4977

£14.99
per case